

**CLEVELAND PUBLIC LIBRARY**

**Finance Committee**  
November 20, 2008

**RESOLUTION REGARDING EMERGENCY WOOD JOIST REPAIRS AT RICE BRANCH**

- WHEREAS, The Board of Library Trustees desires to provide an appropriate, safe environment for the delivery of library services; and
- WHEREAS, The ceiling system, light fixture and duct work, in front of circulation desk of the Rice Branch, had deflected by 3 inches in a downward direction; and
- WHEREAS, After the Building Services Department was notified and removed the ceiling tiles, it was determined that the deflection was caused by the wooden joints that support the ceiling system; and
- WHEREAS, HWH Architects Engineers Planners, Inc. evaluated the damage and determined the ceiling's support system had failed, and that it was necessary to install a new system for the safety of the public and staff; and
- WHEREAS, The Rice Branch has been closed since October 23, 2008 for the safety and welfare of staff and patrons; and
- WHEREAS, *Ohio Revised Code* Section 3375.41 requires public bidding for construction contracts over \$25,000 except in cases of urgent necessity or for security and protection of library property; now therefore be it
- RESOLVED, That the Director and Fiscal Officer be authorized and instructed to enter into an agreement with Schirmer Construction Co. to make the emergency repairs to the Rice Branch roof for an amount not to exceed \$39,000 with the expenditures being charged to the Building and Repair Fund Account: 12100053-53310.



# SCHIRMER CONSTRUCTION CO.

GENERAL CONTRACTORS • COMMERCIAL • INDUSTRIAL • CONSTRUCTION MANAGEMENT • HEAVY HIGHWAY

October 28, 2008

Cleveland Public Library  
325 Superior Avenue  
Cleveland, Ohio 44114 - 1271

Attention: Myron Scruggs  
Facility Manager

Reference: Cleveland Public Library – E. 116<sup>th</sup> Rice Library Branch  
Emergency Wood Joist Repairs – Cost Proposal

Mr. Scruggs,

Pursuant to your request, our subsequent site visit with HWH Architect's representative, Mr. Tom Knapp, on Monday, October 27, 2008, and drawing A-1 dated October 28, 2008, Schirmer Construction Co. proposes to provide the necessary labor, material, equipment, and supervision required to complete the following scope of work for the above referenced project.

- Mobilization
- Provide temporary protection of existing floor
- Remove and reinstall existing acoustical grid ceiling tiles, as necessary
- Inspect existing 2 x 6 joists for structural damages
- Provide and attach additional 2 x 6 joists to damaged joists with 3/8" diameter bolts, approximated at 400 lineal feet, as directed on drawing
- Replace joists damaged beyond repair, as necessary
- Furnish and install three support angles under observed sagging metal lathe ceiling
- Furnish and install additional wood framing at observed undersized framed areas
- Furnish, install, and weld steel support brackets under 2 x 6 ledger boards at 8' centers

Notes: Library to remain closed during repairs  
Excludes testing or removal of any asbestos items

The total cost for the above is estimated at Thirty-Nine Thousand Dollars (\$39,000).  
Work duration is estimated at approximately two weeks. If you have any questions or require additional information, please do not hesitate to contact the undersigned.

Respectfully Submitted,  
Schirmer Construction Co.

Brett J. Iafigliola, E.I.  
Project Engineer

Cc: Mr. Tom Knapp, HWH Architects  
Project File

FIRM QUOTE  
BSI  
11-11-08  
MYRON SCRUGGS  
11/11/08

**HWH** ARCHITECTS  
ENGINEERS  
PLANNERS

1001 LAKESIDE AVENUE • SUITE 600  
CLEVELAND, OHIO 44114  
216 / 875-1000 • FAX 216 / 833-0016

FOR PRINTING  
DATE: 10/26/05  
PROJECT NO.

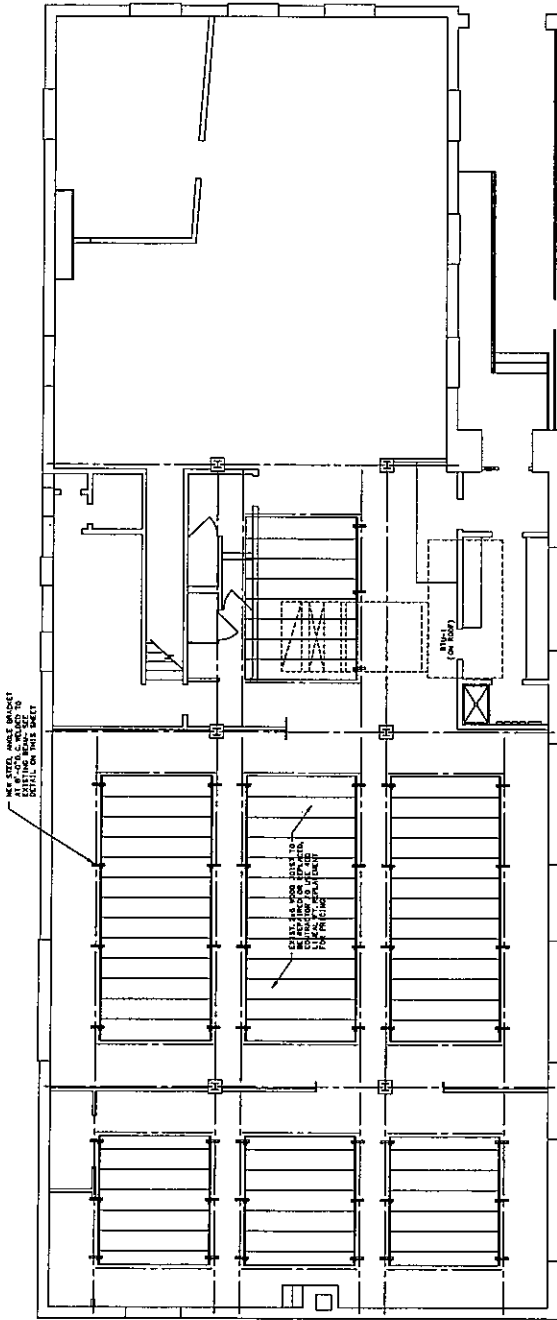


CLEVELAND PUBLIC LIBRARY  
RICE BRANCH  
CLEVELAND, OHIO

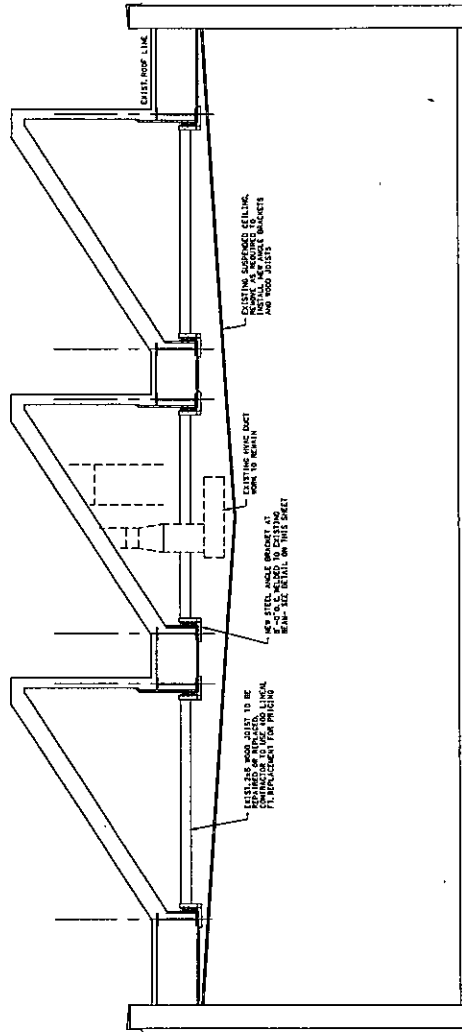
ARCHITECTURAL  
PLAN

DATE: 10/26/05  
DRAWN BY: AUBREY  
CHECKED BY: TK  
PROJECT NO. 05-0016  
SHEET NO. 1 OF 2

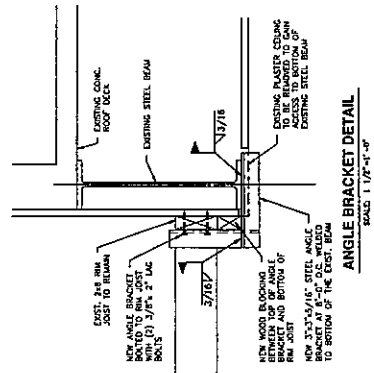
A1



SELECTED CEILING PLAN  
SCALE: 3/8" = 1'-0"



SECTION A-A  
SCALE: 3/8" = 1'-0"



ANGLE BRACKET DETAIL  
SCALE: 1 1/8" = 1'-0"