

Mr Felton Thomas
I want to thank you for
having Evelyn Lechtenberg as
an employee.

She took so much time
with me in trying to find
my danish family in Denmark,

she was so helpful and
courteous that without her
I couldn't of found them.
again Thanks!

Thank You

for being so kind and
helpful Evelyn

Sincerely

Julia Fikowicz



Art by Carp

Dear Ms. Ronney,

"Art, catering, DJ, you guys are doing it big like New York Style", these were your remarks you made to us prior to the exhibit. With 300 visitors on the opening day of the Cleveland Sports Stars Past and Present Art Exhibit, news channel 5 reporting, and numerous newspapers, it is more than fair to say the exhibit was a hit.

Thank you and the Cleveland Public Library for all your hard work and support. Your efforts are noticed. We look forward to working together again!

Sincerely,

Art by Carp

Michael Carpenter and Steven Massari

21 October 2011

Dear Mr. Stoney,

Thank you and much appreciation to Cleveland Public Library for their time and effort to help make the Association of Bookmobile and Outreach Services a Successful Conference. Much effort from your library staff made it a reality. We had Tera Wilson and Linda Sperry sit around that have gotten off the ground. Our evaluations are in and the sessions your staff presented

at the conference were some
of our top scorers.

Thank you for all your
support to Outreach Services

Sincerely

Margaret Marguise
President, ABOS.



Fine Arts
Museums of
San Francisco

Pomegranate

Chiura Obata (American, b. Japan, 1885-1975)
Evening Glow of Yosemite Waterfall, Yosemite National Park, California,
no. 23 of the World Landscape Series, 1930
Color woodcut, 15 3/4 x 11 in. (39.9 x 27.9 cm)

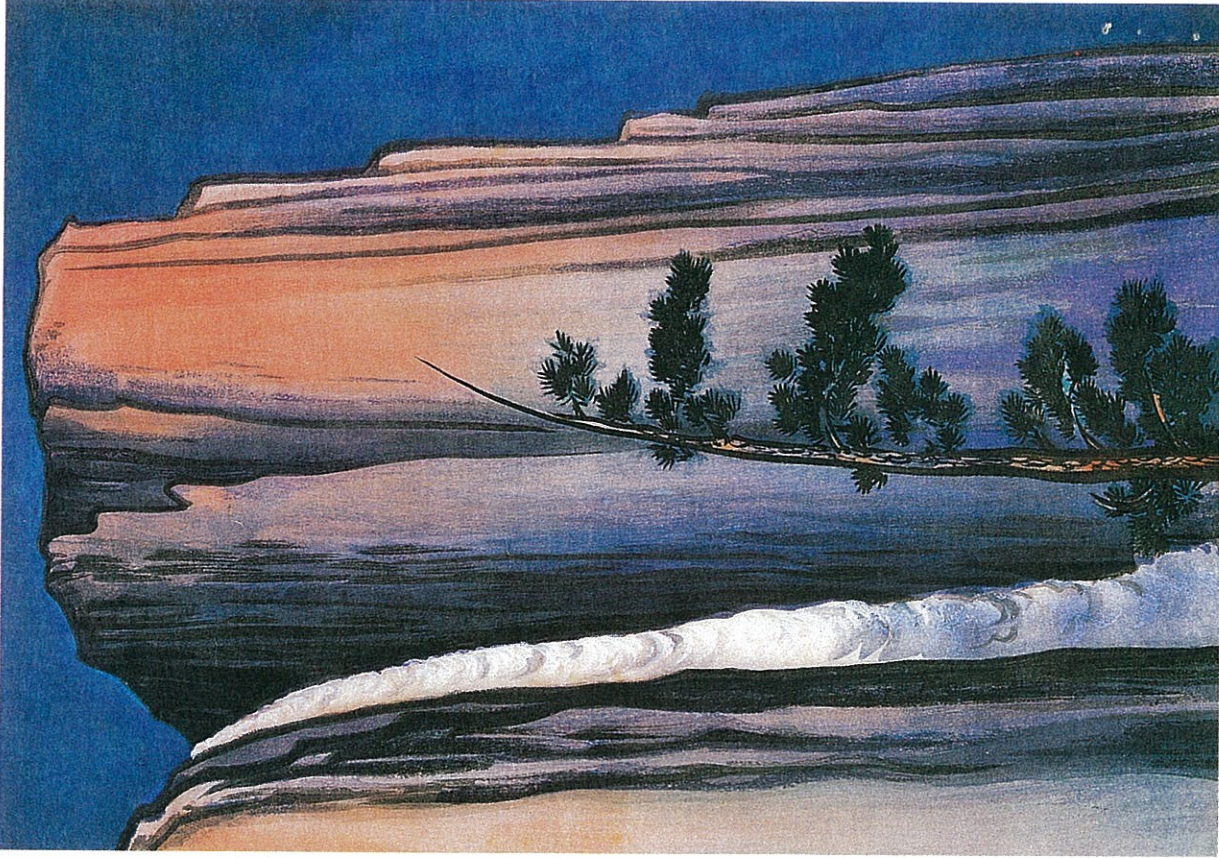
Fine Arts Museums of San Francisco
Achenbach Foundation for Graphic Arts
© Fine Arts Museums of San Francisco

Pomegranate Communications, Inc.
Box 808022, Petaluma CA 94975
www.pomegranate.com

8619
Printed in Korea



PRINTED WITH SOY-BASED
INKS ON RECYCLED PAPER



RECEIVED OCT 27 2011

October 26, 2011

Felton Thomas
Director
Cleveland Public Library
325 Superior Ave., N.E.
Cleveland, OH 44114

Dear Director Thomas:

I am writing to you to let you know how much I value the Cleveland Public Library and to thank you and your staff for what was a wonderful visit our group had on Tuesday, October 25, 2011.

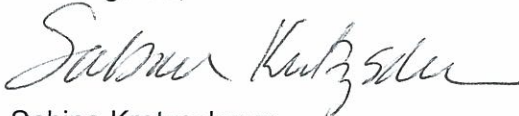
I am an independent scholar who was engaged by the Maltz Museum to give a tour of CPL's WPA murals. This event was a compliment to their current exhibition featuring Karamu artists. Our group of 24 was treated to a wonderful tour by Pam Eyerdam. Stacie Brisker delighted the tour goers by giving them each relevant printed materials about the library and Cleveland's WPA. In fact, every staff person I spoke to in arranging this tour was beyond helpful. In addition, Pam had pulled relevant photographic and other materials on paper from Special Collections. She also not only showed us six ceramic sculptures, but included them, with didactics, in a lovely mini-exhibition.

On the steps outside the library, several of the tour participants expressed how much they enjoyed the library, and how it had been years since they had gone downtown. One remarked they would be back so they could spend a whole day here. Another said it would talk a whole week. Yet another wanted to find a way to let others know what a great institution we had in CPL.

I would like to add that I personally greatly value the library's resources for my research projects. I am always impressed with the extensive holdings at the library, so the books and manuscripts I found for this project were not a surprise, even though I was so happy find so much great information. I am THRILLED to be able to use the historic Plain Dealer online. I use this for database for all kinds of research projects. I also extensively used the digital images available online. I am so appreciative that these tools are available to me.

Thank you to you and your staff for a wonderful tour and I look forward to my next encounter with our great library.

Best regards,



Sabine Kretzschmar
17839 Windward Road
Cleveland, OH 44119
smk17@core.com

cc: Pam Eyerdam