



# SOUTH BRANCH TEMPORARY LOCATION

DECEMBER 20, 2012



# PROJECT SITE

NORTH ▲



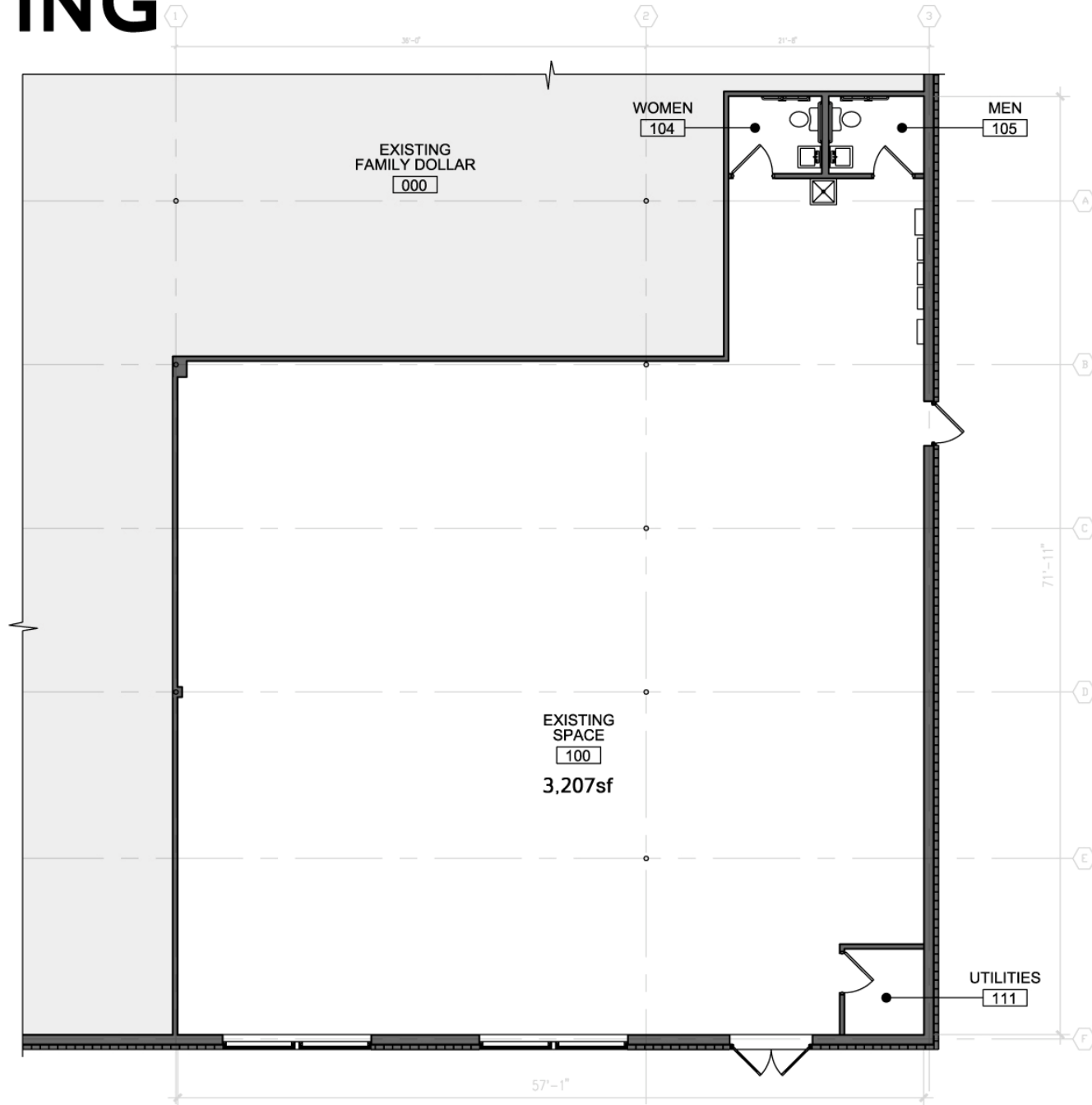
LOOKING WEST ON CLARK AVENUE

WEST 25TH STREET

CLARK AVENUE

# EXISTING

NORTH▲  
3/32"=1'-0"

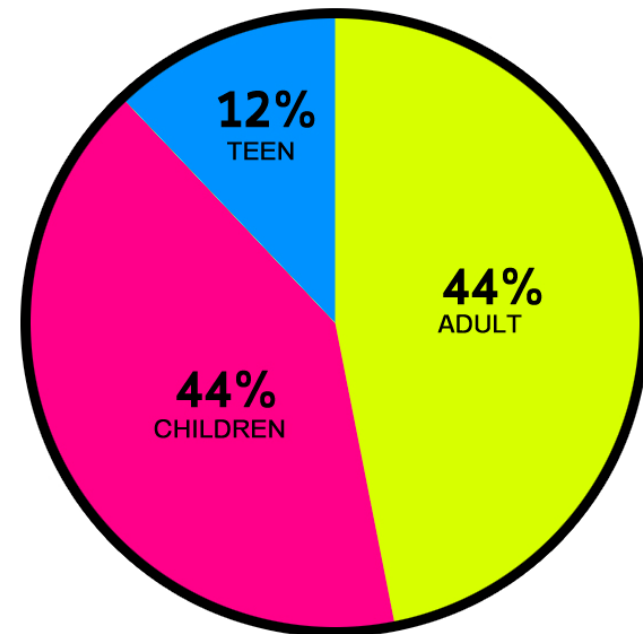


# EXISTING



# LIBRARY NEEDS

- 20 ADULT COMPUTER WORKSTATIONS
- 10 CHILDRENS COMPUTER WORK STATIONS
- 3,000 COMPACT DISC SHELVING
- 3,500 DVD SHELVING
- ADULT BOOK CIRCULATION
- TEEN BOOK CIRCULATION
- CHILDRENS BOOK CIRCULATION
- MAGAZINE CIRCULATION
- SPANISH LANGUAGE BOOK SHELVING
- GAMING AREA
- READING LOUNGE
- LAPTOP LOUNGE
- CIRCULATION DESK
- STAFF WORKSTATIONS
- STAFFWORK ROOM
- OFFICE STORAGE
- TELECOM ROOM
- JANITOR CLOSET



**SOUTH BRANCH  
PRINT CIRC. BY AGE**

# LAYOUT

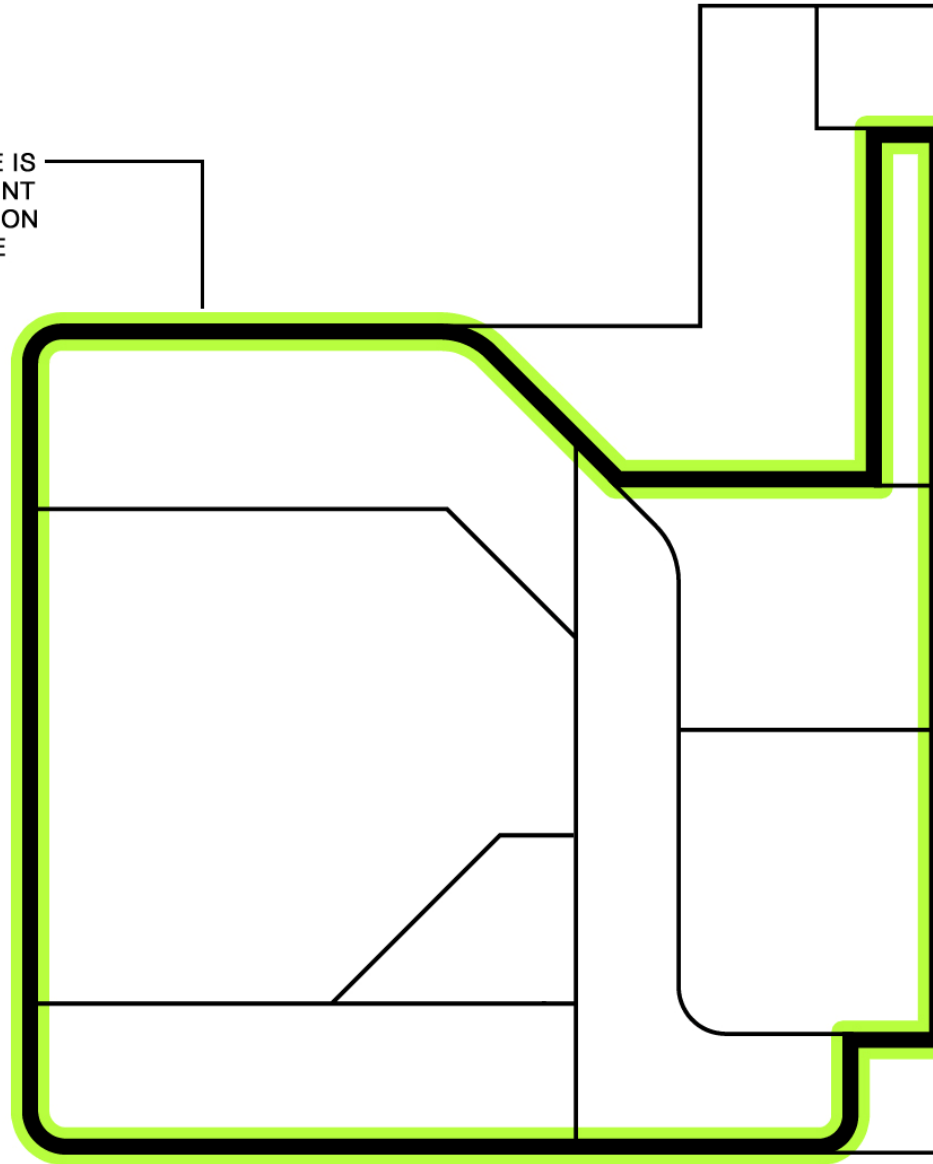
NORTH▲  
3/32"=1'-0"



# LAYOUT

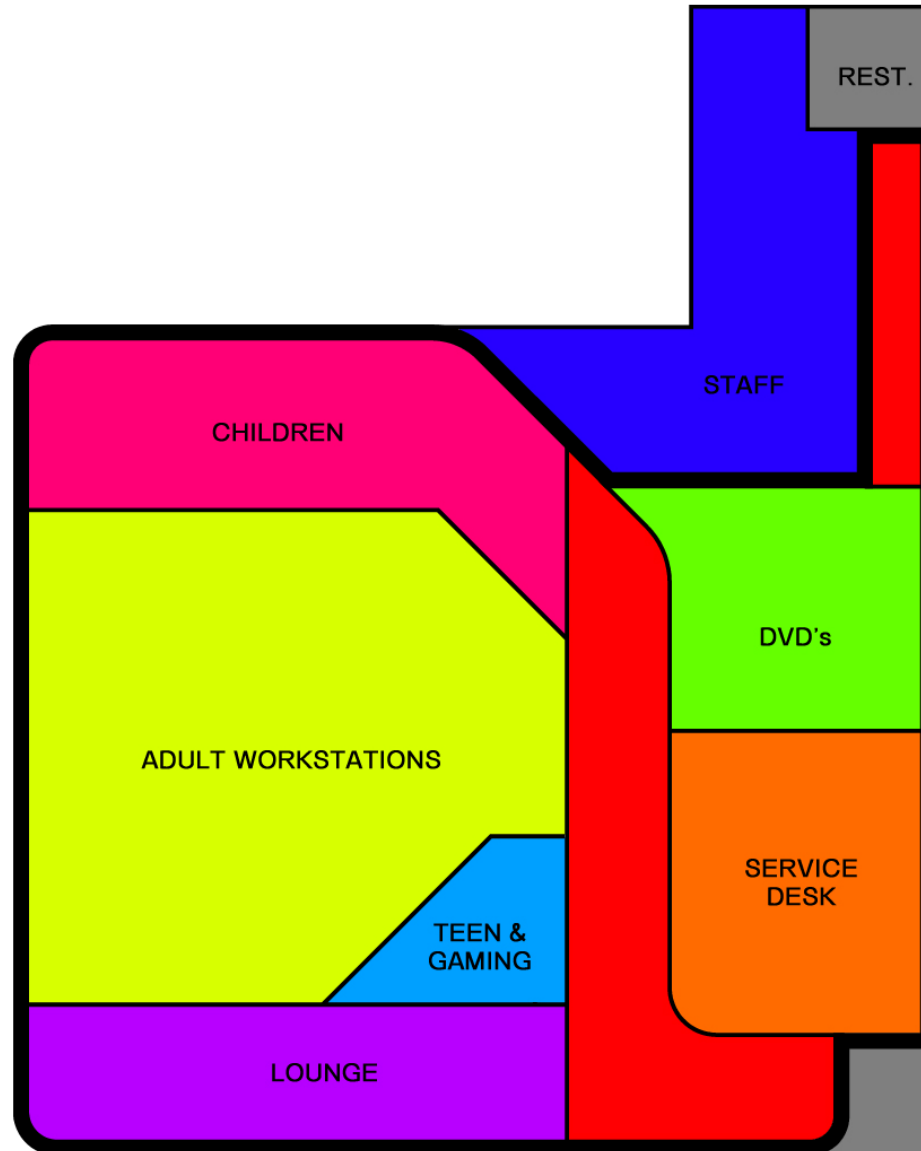
NORTH▲  
3/32"=1'-0"

PERIMETER WALL OF PUBLIC SPACE IS BUILT TO HOUSE SHELVING FOR PRINT AND ELECTRONIC MEDIA CIRCULATION WHILE ALSO ALLOWING DIRECT LINE OF SIGHT TO ENTIRE SPACE FROM SERVICE DESK



# LAYOUT

NORTH▲  
3/32"=1'-0"

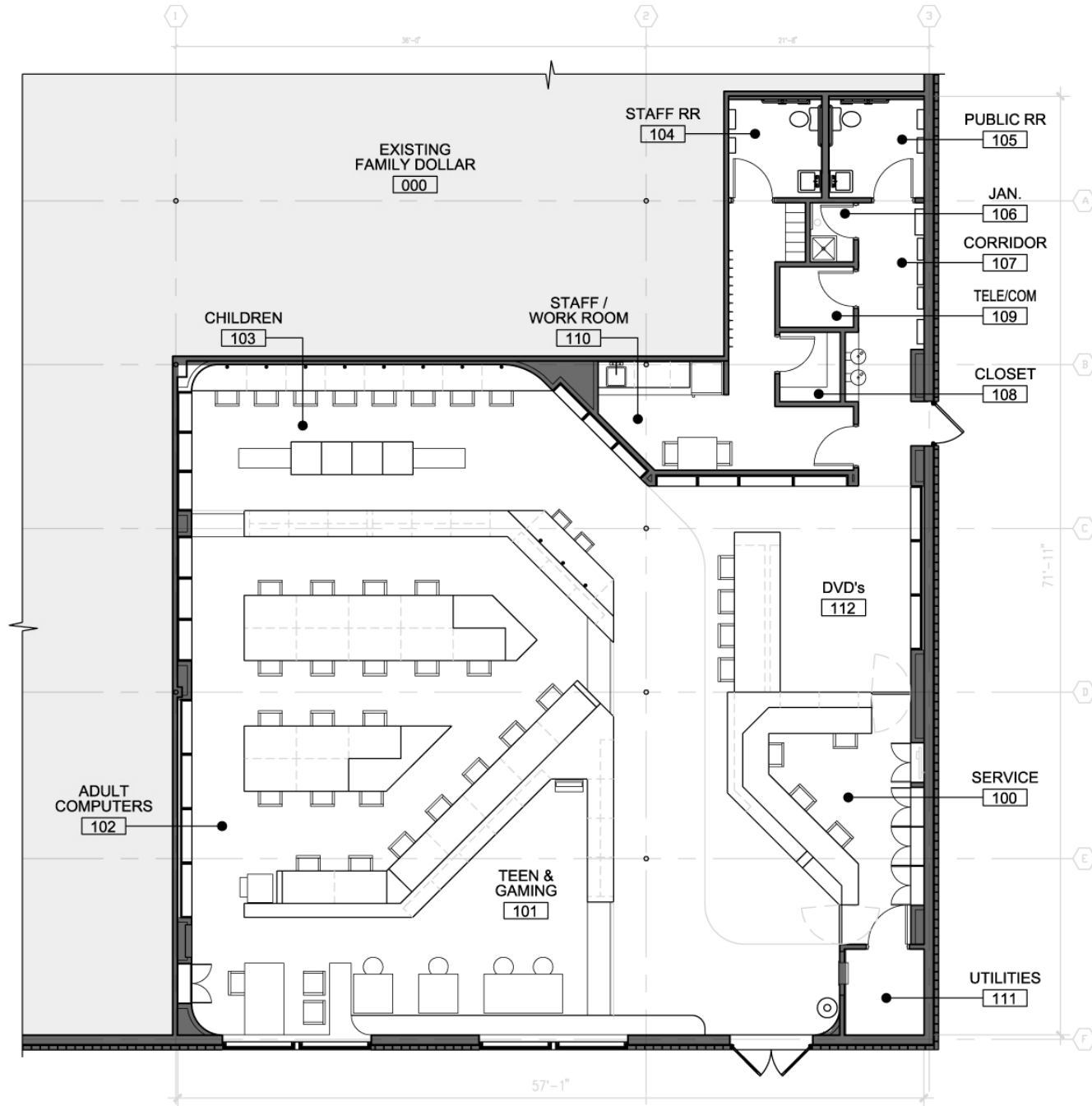


▲  
ENTER

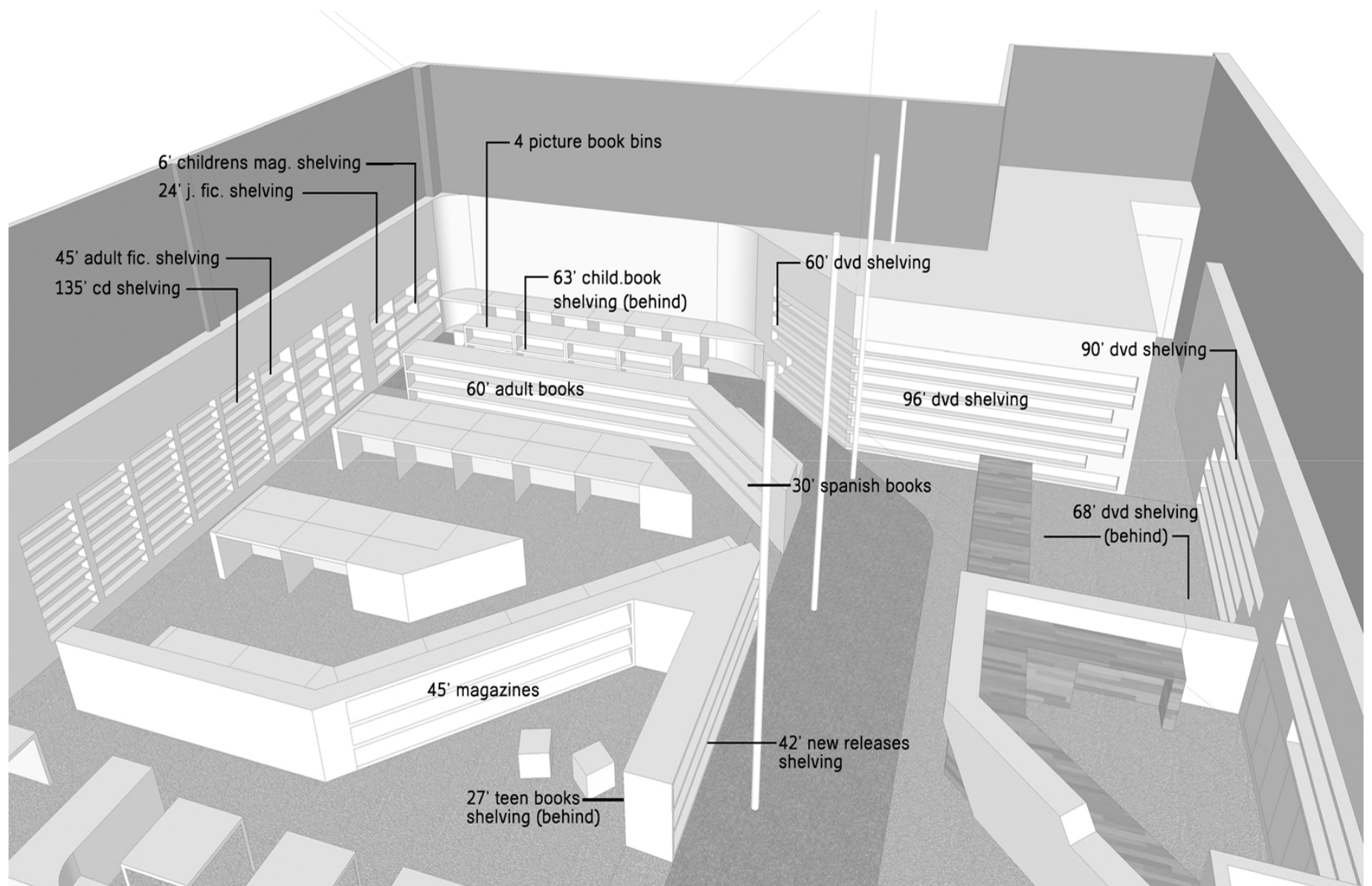


# PLAN

NORTH▲  
3/32"=1'-0"



# SHELF CONFIGURATION



# COLOR PALETTE

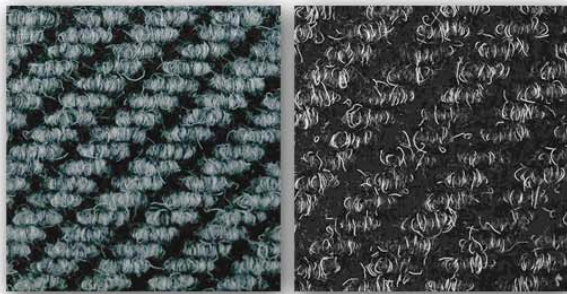


CLEVELAND PUBLIC LIBRARY

# FINISHES & FURNITURE



PAIN



CARPET



WALL BASE



VCT



COUNTER TOP



SHELVING



COMPUTER WORKSTATION & CHAIR



LOOSE CHAIR



STAFF SEATING

INTERIOR VIEW

