

**CLEVELAND PUBLIC LIBRARY  
MONTHLY ACTIVITY REPORT FOR MAY 2014**

CIRCULATION ACTIVITY	Monthly Total		Average Hourly		Year-to-Date		YTD
	2014	2013	2014	2013	2014	2013	Gain/Loss
Main Library	135,557	142,508	652	685	676,050	717,806	-5.8%
Branches	310,070	318,649	1,413	1,454	1,554,077	1,657,671	-6.2%
Mobile Units	5,697	4,221			31,287	26,207	19.4%
Library for the Blind	52,955	53,043			260,559	271,449	-4.0%
OLBPD BARD	11,077	12,493			54,284	61,984	-12.4%
eMedia	18,790	15,599			95,780	77,929	22.9%
<b>TOTAL CIRCULATION</b>	<b>534,146</b>	<b>546,513</b>			<b>2,672,037</b>	<b>2,813,046</b>	<b>-5.0%</b>

ELECTRONIC MEDIA CIRCULATION	Monthly Total		Year-to-Date		YTD	
	2014	2013	2014	2013	Gain/Loss	
eBook	13,156	11,709	69,882	59,645	17.2%	
eAudioBook	4,450	3,765	21,630	17,504	23.6%	
eMusic	48	71	151	345	-56.2%	
eVideo	353	54	1,055	435	142.5%	
Zinio	783		3,062		N/A	
<b>TOTAL eCIRCULATION</b>	<b>18,790</b>	<b>15,599</b>	<b>95,780</b>	<b>77,929</b>	<b>22.9%</b>	Included in circulation activity.

OHIO BRAILLE & AUDIO READING DOWNLOAD (BARD)	Monthly Total		Year-to-Date		YTD	
	2014	2013	2014	2013	Gain/Loss	
Downloads	11,077	12,493	54,284	61,984	-12.4%	Included in circulation activity
Users	640	579	3,329	3,043	9.4%	

COMPUTER USAGE	Number of Computers	Average Session	Number of Sessions		Hours in Use		YTD
			2014	2013	2014	2013	Gain/Loss
Main Library	94	45 minutes	13,178	13,059	9,736	9,621	1.2%
Branches	561	40 minutes	87,770	87,911	58,185	58,010	0.3%
<b>TOTAL USAGE</b>	<b>655</b>		<b>100,948</b>	<b>100,970</b>	<b>67,921</b>	<b>67,631</b>	<b>0.4%</b>

Sessions less than 5 minutes excluded. Hours in use does not include grace periods computers are held for patrons.

WALK-IN COUNT	Monthly Total		Average Hourly		Year-to-Date		YTD
	2014	2013	2014	2013	2014	2013	Gain/Loss
Main Library*	49,478	45,889	225	209	218,805	232,369	-5.8%
Branches	241,370	214,571	1,100	979	1,136,858	1,185,182	-4.1%
Mobile Unit	717	293			2,939	2,971	-1.1%
<b>TOTAL VISITS</b>	<b>291,565</b>	<b>260,753</b>			<b>1,358,602</b>	<b>1,420,522</b>	<b>-4.4%</b>

**REPORT H**

**CLEVELAND PUBLIC LIBRARY  
BRANCH TOTAL CIRCULATION FOR MAY 2014**

	a	b	c	d	e	f	g
<b>BRANCH</b>	<b>Branch Circulation</b>	<b>Sent from Other Branches</b>	<b>Sent from Main</b>	<b>Sent from Other CLEVNET Systems</b>	<b>Total Direct Circulation (a+b+c+d)</b>	<b>Sent to Other CLEVNET Systems</b>	<b>Total Circulation (e+f)</b>
<b>Addison</b>	7,559	690	767	1,465	10,481	666	11,147
<b>Brooklyn</b>	4,290	507	525	732	6,054	481	6,535
<b>Carnegie West</b>	8,745	937	1,212	1,503	12,397	1,107	13,504
<b>Collinwood</b>	5,278	701	590	955	7,524	707	8,231
<b>East 131st</b>	3,666	477	416	600	5,159	325	5,484
<b>Eastman</b>	12,557	1,362	1,450	2,607	17,976	2,158	20,134
<b>Fleet*</b>	8,990	979	1,113	1,709	12,791	1,072	13,863
<b>Fulton</b>	15,667	698	693	978	18,036	820	18,856
<b>Garden Valley</b>	3,145	152	135	254	3,686	266	3,952
<b>Glenville</b>	4,878	656	516	1,052	7,102	524	7,626
<b>Harvard-Lee</b>	5,806	637	764	1,227	8,434	758	9,192
<b>Hough</b>	3,446	367	277	398	4,488	307	4,795
<b>Jefferson</b>	4,917	660	959	1,162	7,698	757	8,455
<b>Langston Hughes</b>	5,166	763	633	1,006	7,568	472	8,040
<b>Lorain</b>	8,659	961	910	1,577	12,107	803	12,910
<b>Martin Luther King, Jr.</b>	7,534	769	859	1,230	10,392	1,001	11,393
<b>Memorial-Nottingham</b>	8,861	760	1,273	2,287	13,181	1,275	14,456
<b>Mt. Pleasant</b>	3,563	508	387	558	5,016	368	5,384
<b>Rice</b>	8,534	686	804	1,048	11,072	906	11,978
<b>Rockport</b>	13,487	1,232	1,196	2,271	18,186	1,920	20,106
<b>South</b>	6,187	677	626	1,246	8,736	594	9,330
<b>South Brooklyn</b>	13,498	1,286	1,715	2,856	19,355	2,170	21,525
<b>Sterling</b>	4,013	378	442	618	5,451	337	5,788
<b>Union</b>	5,326	625	594	842	7,387	465	7,852
<b>Walz</b>	10,723	959	1,295	1,728	14,705	1,325	16,030
<b>West Park</b>	12,260	1,412	2,844	3,998	20,514	2,434	22,948
<b>Woodland</b>	7,724	648	532	1,020	9,924	632	10,556
<b>TOTAL</b>	204,479	20,487	23,527	36,927	285,420	24,650	310,070

\*Fleet branch circulation includes remaining circulation generated by Broadway branch items

**CLEVELAND PUBLIC LIBRARY  
BRANCH TOTAL CIRCULATION COMPARATIVE FOR MAY 2014**

BRANCH	Monthly Total		Year-to-Date		YTD	YTD
	2014	2013	2014	2013	Gain/Loss	%G/L
Addison	11,147	11,535	59,697	55,758	3,939	7.1%
Brooklyn	6,535	6,417	32,631	38,306	-5,675	-14.8%
Carnegie West	13,504	13,260	67,497	69,609	-2,112	-3.0%
Collinwood	8,231	9,104	44,450	50,358	-5,908	-11.7%
East 131st	5,484	5,227	26,720	27,137	-417	-1.5%
Eastman	20,134	23,571	103,948	108,116	-4,168	-3.9%
Fleet*	13,863	14,799	71,500	81,658	-10,158	-12.4%
Fulton	18,856	12,870	81,748	72,065	9,683	13.4%
Garden Valley	3,952	4,457	18,776	23,306	-4,530	-19.4%
Glenville	7,626	8,844	41,204	46,573	-5,369	-11.5%
Harvard-Lee	9,192	9,978	45,788	52,619	-6,831	-13.0%
Hough	4,795	4,835	24,690	24,964	-274	-1.1%
Jefferson	8,455	8,316	43,639	45,060	-1,421	-3.2%
Langston Hughes	8,040	8,221	35,976	41,436	-5,460	-13.2%
Lorain	12,910	12,554	57,636	64,907	-7,271	-11.2%
Martin Luther King, Jr.	11,393	9,439	56,119	45,040	11,079	24.6%
Memorial-Nottingham	14,456	14,250	73,648	78,508	-4,860	-6.2%
Mt. Pleasant	5,384	6,964	30,039	34,248	-4,209	-12.3%
Rice	11,978	13,475	61,322	68,619	-7,297	-10.6%
Rockport	20,106	21,625	102,833	113,081	-10,248	-9.1%
South	9,330	8,706	47,533	44,450	3,083	6.9%
South Brooklyn	21,525	23,295	107,084	116,542	-9,458	-8.1%
Sterling	5,788	6,029	29,658	36,055	-6,397	-17.7%
Union	7,852	8,444	42,027	43,881	-1,854	-4.2%
Walz	16,030	17,520	83,535	94,225	-10,690	-11.3%
West Park	22,948	23,063	111,348	119,053	-7,705	-6.5%
Woodland	10,556	11,851	53,031	62,097	-9,066	-14.6%
<b>TOTAL</b>	<b>310,070</b>	<b>318,649</b>	<b>1,554,077</b>	<b>1,657,671</b>	<b>-103,594</b>	<b>-6.2%</b>

\*Fleet branch circulation includes remaining circulation generated by Broadway branch items

**CLEVELAND PUBLIC LIBRARY  
BRANCH ATTENDANCE MAY 2014**

BRANCH	Monthly Total		Year-to-Date		YTD	YTD
	2014	2013	2014	2013	Gain/Loss	%G/L
Addison	6,610	5,765	29,585	33,256	-3,671	-11.0%
Brooklyn	4,116	3,949	19,084	22,469	-3,385	-15.1%
Carnegie West	15,720	13,265	74,374	80,511	-6,137	-7.6%
Collinwood	6,876	6,002	33,949	35,314	-1,365	-3.9%
East 131st	8,198	6,222	36,146	36,798	-652	-1.8%
Eastman	10,580	10,873	57,084	62,359	-5,275	-8.5%
Fleet	11,689	10,788	53,441	59,572	-6,131	-10.3%
Fulton	7,807	7,566	36,198	42,713	-6,515	-15.3%
Garden Valley	5,185	3,907	23,347	21,280	2,067	9.7%
Glenville	6,833	6,434	32,484	36,097	-3,613	-10.0%
Harvard-Lee	10,165	8,491	48,183	44,873	3,310	7.4%
Hough	10,034	9,492	47,562	48,157	-595	-1.2%
Jefferson	7,508	6,649	38,028	38,885	-857	-2.2%
Langston Hughes	8,275	6,551	34,789	33,287	1,502	4.5%
Lorain	8,983	7,576	40,020	40,793	-773	-1.9%
Martin Luther King, Jr.	6,345	7,863	31,629	30,222	1,407	4.7%
Memorial-Nottingham	8,021	7,863	30,299	37,821	-7,522	-19.9%
Mt. Pleasant	7,059	5,247	33,568	31,320	2,248	7.2%
Rice	12,514	13,150	64,347	70,299	-5,952	-8.5%
Rockport	12,649	8,812	62,053	53,503	8,550	16.0%
South	7,933	8,009	39,316	33,719	5,597	16.6%
South Brooklyn	13,434	11,277	61,569	69,308	-7,739	-11.2%
Sterling	10,796	10,605	50,146	61,425	-11,279	-18.4%
Union	7,098	5,249	29,068	27,953	1,115	4.0%
Walz	9,564	8,340	44,383	48,232	-3,849	-8.0%
West Park	9,611	8,260	49,655	49,409	246	0.5%
Woodland	7,767	6,366	36,551	35,607	944	2.7%
<b>TOTAL</b>	<b>241,370</b>	<b>214,571</b>	<b>1,136,858</b>	<b>1,185,182</b>	<b>-48,324</b>	<b>-4.1%</b>

**CLEVELAND PUBLIC LIBRARY  
BRANCH RANKINGS MAY 2014**

Branch	Total Circulation
1 <b>West Park</b>	22,948
2 <b>South Brooklyn</b>	21,525
3 <b>Eastman</b>	20,134
4 <b>Rockport</b>	20,106
5 <b>Fulton</b>	18,856
6 <b>Walz</b>	16,030
7 <b>Memorial-Nottingham</b>	14,456
8 <b>Fleet*</b>	13,863
9 <b>Carnegie West</b>	13,504
10 <b>Lorain</b>	12,910
11 <b>Rice</b>	11,978
12 <b>Martin Luther King, Jr.</b>	11,393
13 <b>Addison</b>	11,147
14 <b>Woodland</b>	10,556
15 <b>South</b>	9,330
16 <b>Harvard-Lee</b>	9,192
17 <b>Jefferson</b>	8,455
18 <b>Collinwood</b>	8,231
19 <b>Langston Hughes</b>	8,040
20 <b>Union</b>	7,852
21 <b>Glenville</b>	7,626
22 <b>Brooklyn</b>	6,535
23 <b>Sterling</b>	5,788
24 <b>East 131st</b>	5,484
25 <b>Mt. Pleasant</b>	5,384
26 <b>Hough</b>	4,795
27 <b>Garden Valley</b>	3,952
	<b>310,070</b>

Branch	Attendance
1 <b>Carnegie West</b>	15,720
2 <b>South Brooklyn</b>	13,434
3 <b>Rockport</b>	12,649
4 <b>Rice</b>	12,514
5 <b>Fleet</b>	11,689
6 <b>Sterling</b>	10,796
7 <b>Eastman</b>	10,580
8 <b>Harvard-Lee</b>	10,165
9 <b>Hough</b>	10,034
10 <b>West Park</b>	9,611
11 <b>Walz</b>	9,564
12 <b>Lorain</b>	8,983
13 <b>Langston Hughes</b>	8,275
14 <b>East 131st</b>	8,198
15 <b>Memorial-Nottingham</b>	8,021
16 <b>South</b>	7,933
17 <b>Fulton</b>	7,807
18 <b>Woodland</b>	7,767
19 <b>Jefferson</b>	7,508
20 <b>Union</b>	7,098
21 <b>Mt. Pleasant</b>	7,059
22 <b>Collinwood</b>	6,876
23 <b>Glenville</b>	6,833
24 <b>Addison</b>	6,610
25 <b>Martin Luther King, Jr.</b>	6,345
26 <b>Garden Valley</b>	5,185
27 <b>Brooklyn</b>	4,116
	<b>241,370</b>

Branch	Population	
	2010	2000
1 <b>South Brooklyn</b>	32,043	34,217
2 <b>West Park</b>	27,814	29,398
3 <b>Fleet**</b>	26,727	34,598
4 <b>Eastman</b>	23,674	25,873
5 <b>Rockport</b>	19,896	21,467
6 <b>Fulton</b>	19,647	22,575
7 <b>Rice</b>	19,462	25,893
8 <b>Memorial-Nottingham</b>	19,271	22,598
9 <b>Harvard-Lee</b>	17,655	21,246
10 <b>Walz</b>	16,063	18,497
11 <b>Collinwood</b>	14,769	19,377
12 <b>Langston Hughes</b>	14,439	21,224
13 <b>Glenville</b>	14,006	20,302
14 <b>Addison</b>	13,603	19,263
15 <b>East 131st</b>	13,025	18,001
16 <b>Mt. Pleasant</b>	12,792	17,155
17 <b>Lorain</b>	12,588	14,589
18 <b>Martin Luther King, Jr.</b>	12,392	15,483
19 <b>Carnegie West</b>	10,487	11,716
20 <b>Union</b>	8,416	12,603
21 <b>Sterling</b>	8,267	8,712
22 <b>Woodland</b>	7,946	7,213
23 <b>South</b>	6,325	7,729
24 <b>Hough</b>	5,667	7,845
25 <b>Brooklyn</b>	5,524	6,430
26 <b>Jefferson</b>	3,515	3,987
27 <b>Garden Valley</b>	2,310	3,220
28 <b>Broadway**</b>		1,966
	<b>388,323</b>	<b>473,177</b>

\*Fleet branch circulation includes remaining circulation generated by Broadway branch items

\*\*Broadway and Fleet services areas merged

Prepared By: Northern Ohio Data and Information Service –  
NODIS, Maxine Goodman Levin College of Urban Affairs,  
Cleveland State University

**CLEVELAND PUBLIC LIBRARY  
MONTHLY ACTIVITY REPORT FOR MAY 2014**

<b>OTHER TRANSACTIONS</b>	<b>Monthly Total</b>		<b>Year-to-Date</b>		<b>YTD</b>
	<b>2014</b>	<b>2013</b>	<b>2014</b>	<b>2013</b>	<b>Gain/Loss</b>
<b>Loans* to:</b>					
<b>CLEVNET</b>	76,173	84,355	387,549	403,224	-3.9%
<b>MORE</b>	476	850	3,293	3,919	-16.0%
<b>Other Libraries</b>	592	719	3,488	3,762	-7.3%
<b>TOTAL</b>	<b>77,241</b>	<b>85,924</b>	<b>394,330</b>	<b>410,905</b>	<b>-4.0%</b>

\*Totals included in Main Library and Branch circulation counts.

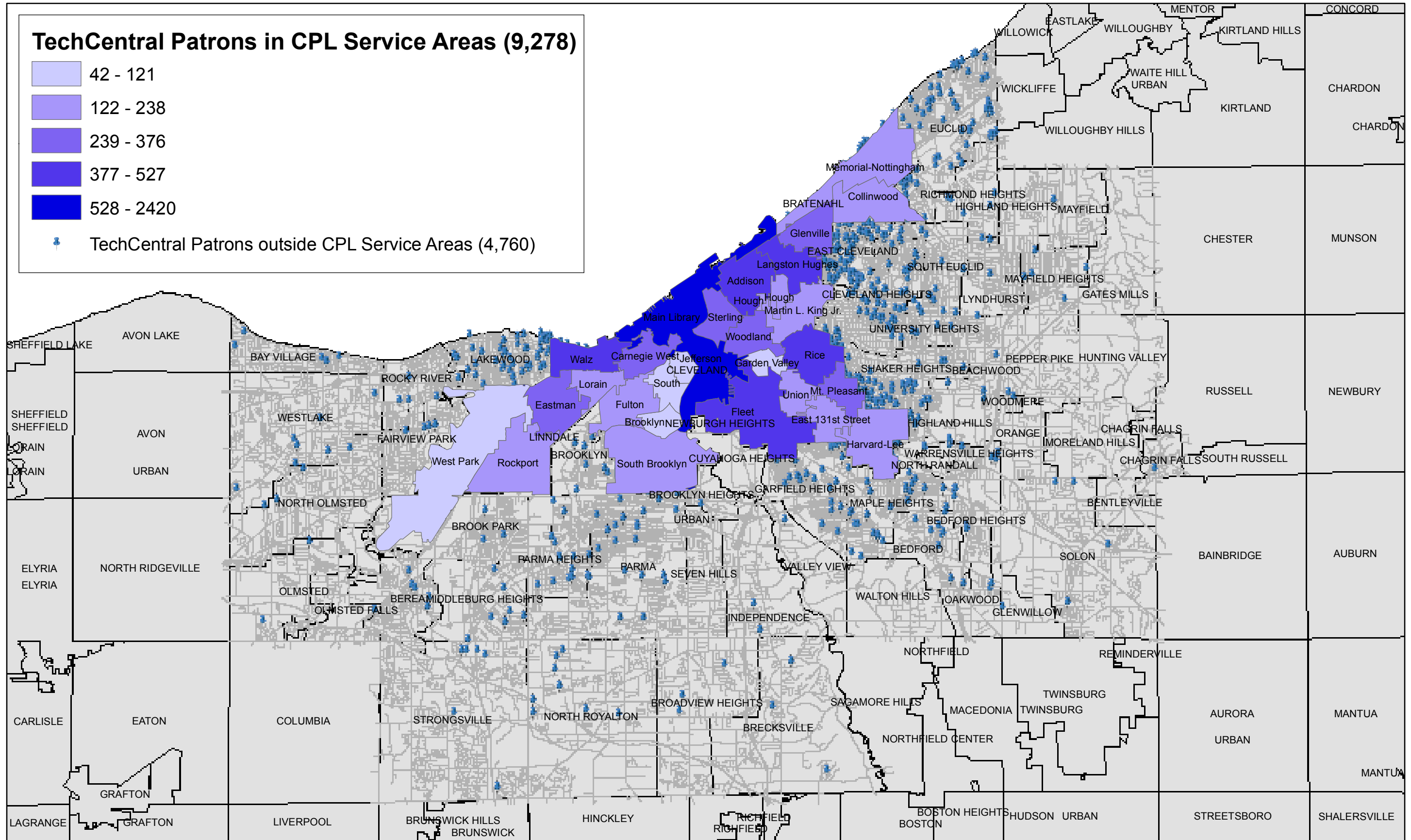
<b>ANALYSIS OF MAIN LIBRARY REFERENCE QUESTION LOAD</b>	<b>Monthly Total</b>		<b>Year-to-Date</b>		<b>YTD</b>
	<b>2014</b>	<b>2013</b>	<b>2014</b>	<b>2013</b>	<b>Gain/Loss</b>
<b>Projected</b>	18,026	20,863	128,404	132,138	-2.8%
<b>KnowItNow Web Reference*</b>	370	594	1,877	3,114	-39.7%
<b>Interlibrary Loan Requests</b>	1,068	4,354	9,673	23,800	-59.4%
<b>TOTAL</b>	<b>19,464</b>	<b>25,811</b>	<b>139,954</b>	<b>159,052</b>	<b>-12.0%</b>

\*Questions taken by CPL staff only. As more partner libraries throughout Ohio sign on to provide the service, what had been CPL's disproportionate share as a provider will continue to diminish.

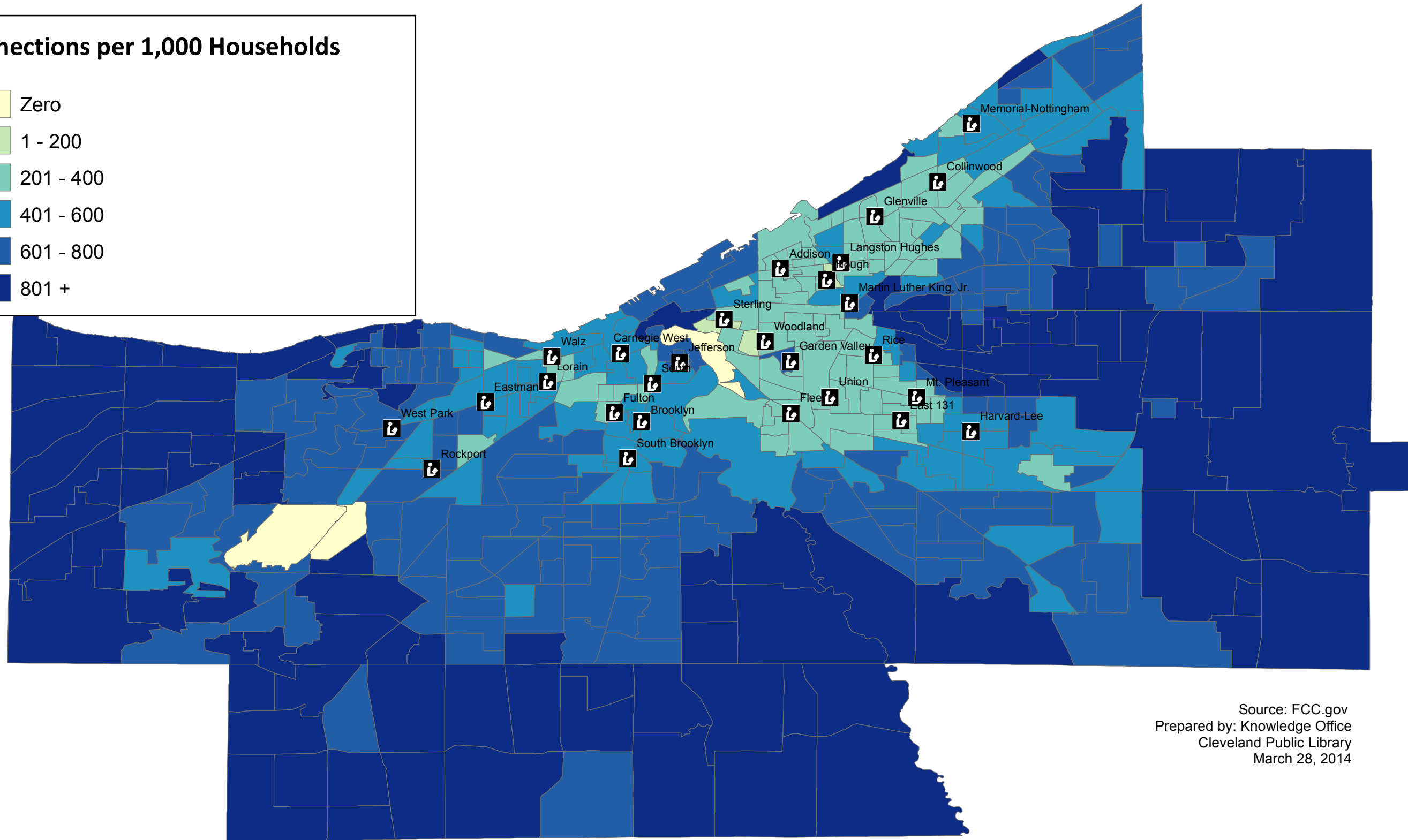
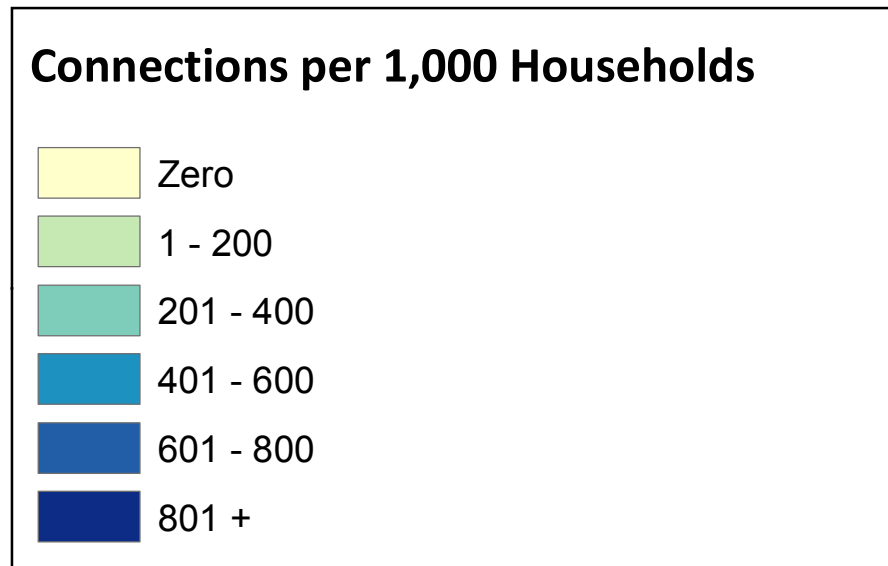
<b>CHANGES IN PERMANENT COLLECTION</b>	<b>Monthly Total</b>		<b>Year-to-Date</b>		<b>YTD</b>
	<b>2014</b>	<b>2013</b>	<b>2014</b>	<b>2013</b>	<b>Gain/Loss</b>
<b>New Titles Added</b>	6,826	5,462	29,035	26,875	8.0%
<b>Total Items Added</b>	21,873	24,329	95,559	110,260	-13.3%

<b>HOURS OPEN</b>	<b>Monthly Total</b>		<b>Year-to-Date</b>		<b>YTD</b>
	<b>2014</b>	<b>2013</b>	<b>2014</b>	<b>2013</b>	<b>Gain/Loss</b>
<b>Main Library</b>	208	208	990	1,008	-1.8%
<b>Branches</b>	5,936	5,930	28,302	28,792	-1.7%

# TechCentral Public Computer Users, May 2014



# Residential Fixed High-Speed Connections per 1,000 Households in Cuyahoga County



Source: FCC.gov  
Prepared by: Knowledge Office  
Cleveland Public Library  
March 28, 2014