

# Community Café *at the* South Brooklyn Branch

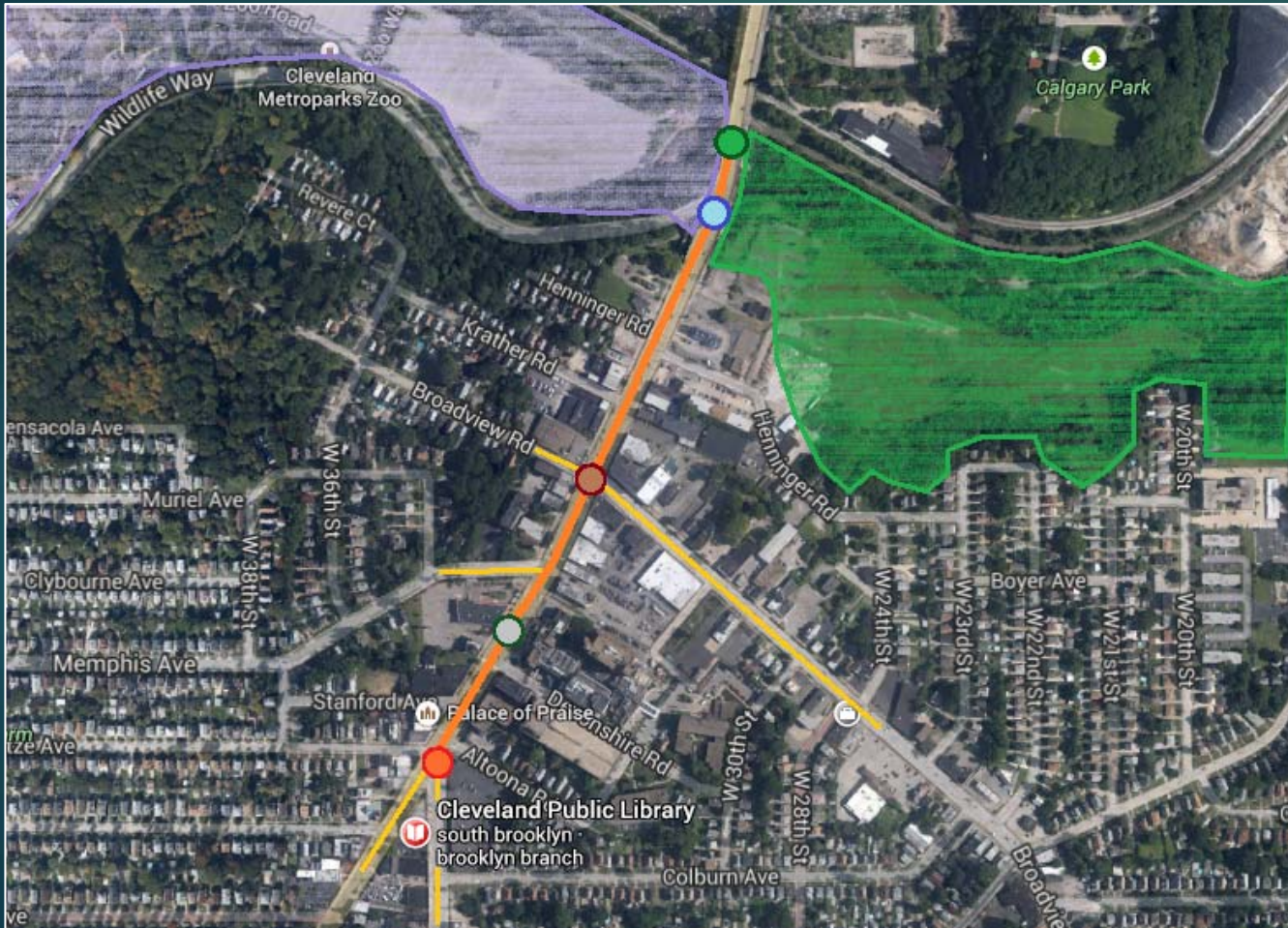


*A partnership between Old Brooklyn Community Development Corporation and the Cleveland Public Library*



*Jeffrey T. Verespej  
Executive Director - OBCDC*

# Main Street Revival



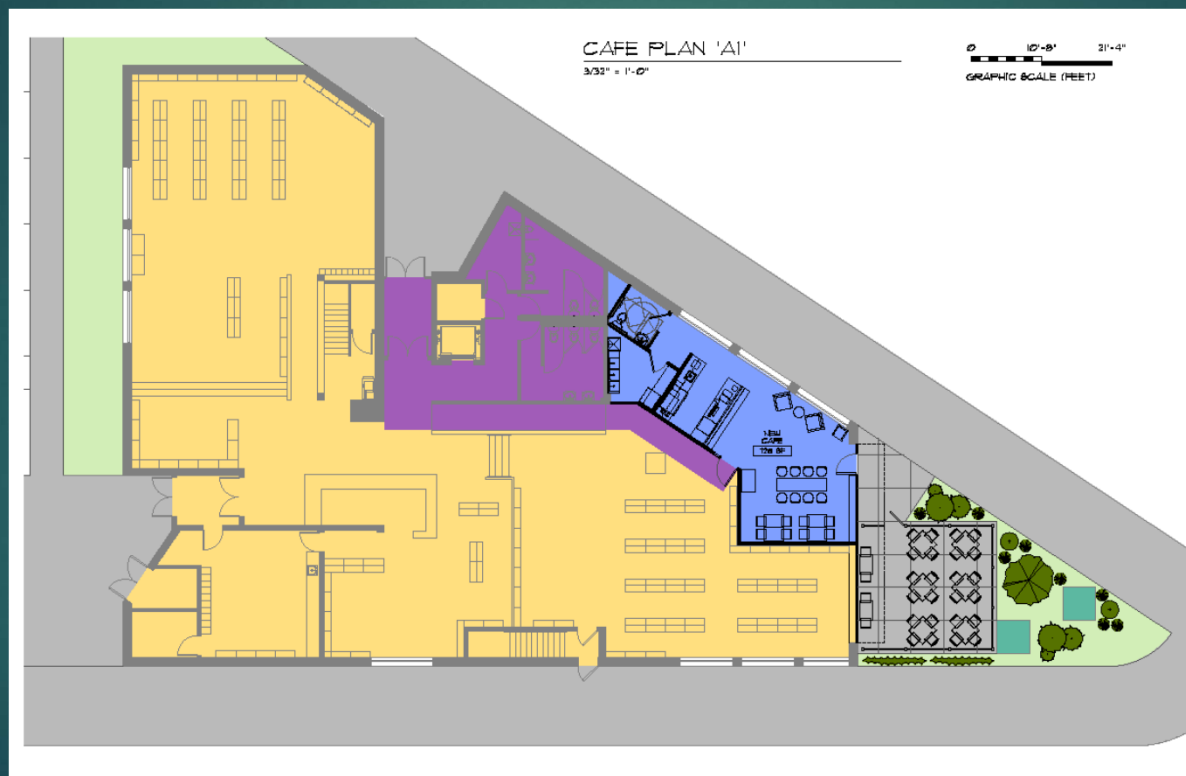
- Henninger Landfill/Future Park
- Metroparks Zoo
- Broadview & Pearl (Main Intersection)
- MetroHealth Old Brooklyn Health Center
- South Brooklyn Public Library





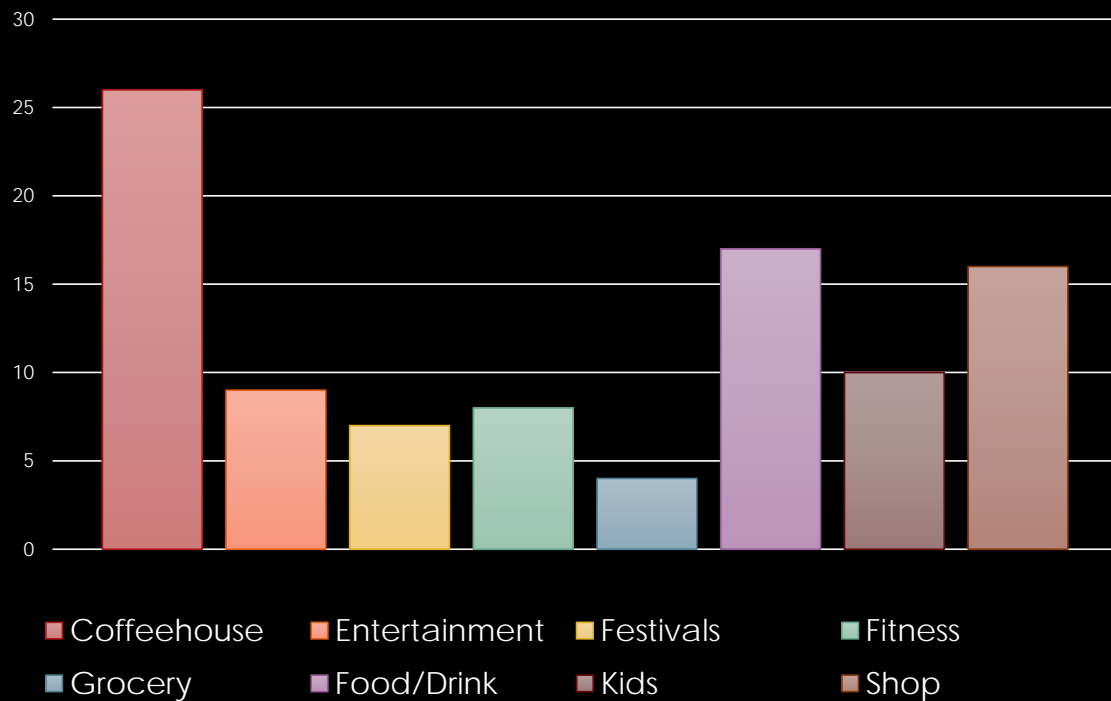


Projected Construction Budget	
Construction of "Vanilla Box"	\$94,000
Systems	\$37,000
Finishes and Equipment	\$64,000
Contingency & Overhead	\$35,000
<b>Total</b>	<b>\$230,000</b>





## Old Brooklyn's "I wish we had \_\_\_\_" Survey Results



**2013**

**160,347 visitors**  
**281,803 items**

**#1 October 2014**



Partners for Economic Opportunity



# Community Café Timeline

- October 2014** Presentation of concept to Cleveland Neighborhood Progress (CNP)
- November 2014** Concept awarded \$30,000 for CNP Neighborhood Solutions Award
- November 2014** Article published in Freshwater Cleveland announcing project
- December 2014** Initial review with Cleveland Public Library (CPL) leadership to review grant and project options
- January 2015** Four café layout options completed
- February 2015** Preferred layout selected in conjunction with CPL leadership based off of costs, logistics, and library needs
- April 2015** Meeting conducted with CPL facilities management team to review plans

*Next Steps: Adoption and approval to develop construction drawings, solicit bids, and select an operator for community café in order to show substantial progress by November 2015 grant deadline*